

Model 55 Belt Conveyor Systems



AUTO-KINETICS, INC.

Quality people mean quality products.

215 Vollmer Ave., P.O. Box 1109 Oldsmar, FL 34677-1109 • TEL: 813/855-7040 • FAX: 813/854-4510

E-mail: sales@autokineticsinc.com • Visit our website: www.autokineticsinc.com

© 2000 Auto-Kinetics, Inc., All rights reserved. Auto-Kinetics and the AK logo are registered trademarks of Auto-Kinetics, Inc.

BASIC CONVEYOR INFORMATION

Auto-Kinetics Model 55 Belt Conveyors offer a cost-effective alternative to conventional welded steel conveyors. The T-slotted, extruded aluminum frame and bolt on components make for a system that is strong, modular, attractive and that can be easily reconfigured in the field. The conveyors are compatible with our line of structural extrusions and components, which allow for many custom configuration possibilities.

STANDARD FEATURES

- 16 ga. stainless steel wear surface.
- Sealed ball bearings on all pulleys.
- Center drive module can be positioned anywhere along the conveyor.
- Special conveyor configurations are available upon request.
- To order, specify:
 - Drive style and location (see pages 6-9)
 - Nominal width
 - Overall length
 - Belt style (see page 5)
 - Shaft output (left or right hand)
 - Live load
 - Belt speed (FPM)
 - Floor stands (see page 10)
 - Side rail style (see page 11)

CONVEYOR DIMENSIONS

END DRIVE	LENGTH "L"	
	MINIMUM	MAXIMUM
Standard	380MM (15")	3M (10')
*Heavy-duty	510MM (20")	9M (30')

CENTER DRIVE	LENGTH "L"	
	MINIMUM	MAXIMUM
Standard	660MM (26")	3M (10')
*Heavy-duty	810MM (32")	15M (50')

*Heavy-duty idlers provide an additional 25MM (1.0") of belt tensioning adjustment, facilitating easier belt change on longer and wider conveyors.

STANDARD FRAME WIDTHS (W')

40MM (1.57")	200MM (7.87")
80MM (3.15")	240MM (9.45")
120MM (4.72")	280MM (11.02")
160MM (6.30")	320MM (12.60")

HEAVY DUTY FRAME WIDTHS ("W")

40MM (1.57")	280MM (11.02")
80MM (3.15")	320MM (12.60")
120MM (4.72")	400MM (15.75")
160MM (6.30")	480MM (18.90")
200MM (7.87")	560MM (22.05")
240MM (9.45")	640MM (25.20")

NOTE: Belt Width = Frame Width "W" - 8MM (.31")

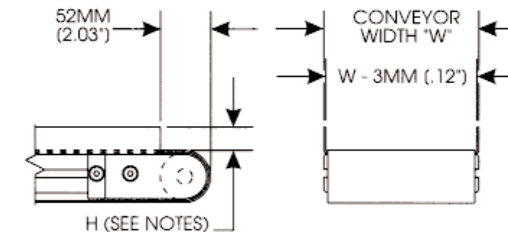
DRIVE SHAFTS

Drive shafts are available in 1/2" and 5/8" diameters with standard keys. They are available with left-hand or right-hand output (right-hand output shown). Dimensions are as follows:

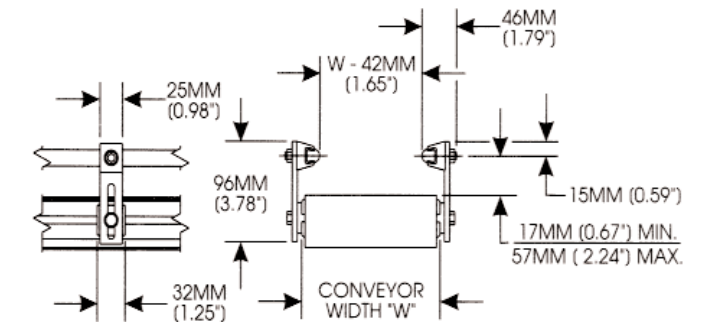
Shaft Size	"A" Diameter	"B" Length
1/2"	12.7 MM (.500")	21 MM (.83")
5/8"	15.9 MM (.625")	40 MM (1.57")

SIDE RAIL ASSEMBLIES

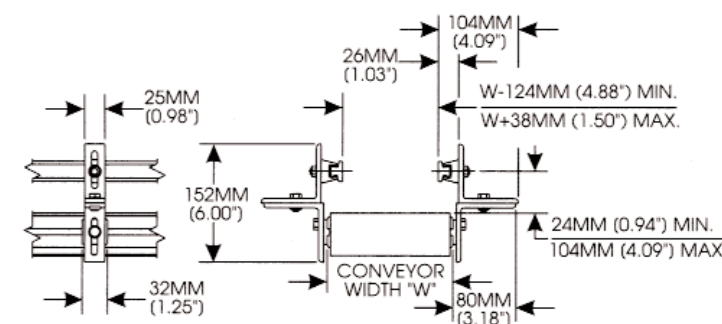
FIXED SIDE RAIL



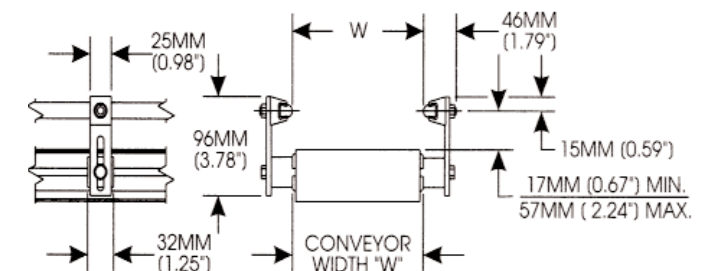
2-WAY ADJUSTABLE RAIL, NARROW



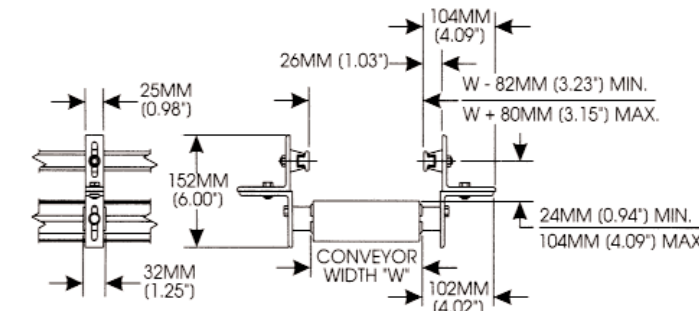
4-WAY ADJUSTABLE RAIL, NARROW



2-WAY ADJUSTABLE RAIL, WIDE



4-WAY ADJUSTABLE RAIL, WIDE



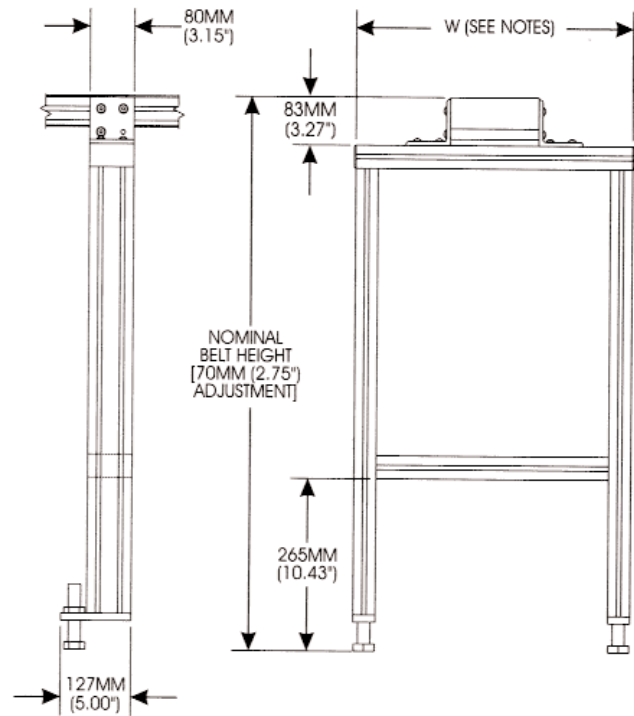
- Adjustable side rails are stainless steel reinforced UHMW, and are available in a round face (shown on 2-way adjustable rail illustration) or a 25 MM (1.00") wide flat face (shown on 4-way adjustable illustration).
- Fixed side rails are 16 ga. stainless steel and are available in any height "H" from 13 MM (.50") and higher.
- Other side rail configurations are available upon request.
- To order fixed rails, specify the desired rail height "H".
- To order adjustable side rails, specify:
 - 2-way or 4-way adjustable
 - Round or flat face rail
 - Narrow or wide rail width

SPECIALS

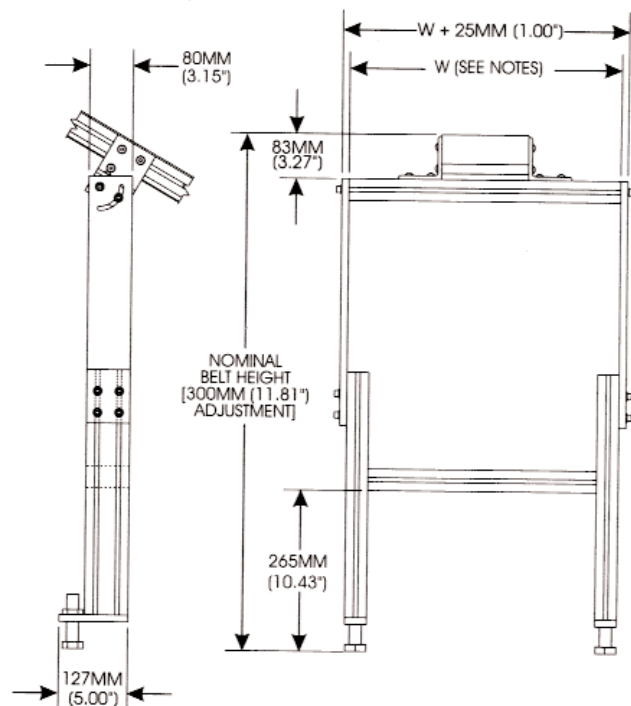
If you don't see what you need in this catalog, call us and ask. We do many custom modifications to the model 55 Conveyor, including:

- Dual belt conveyors
- Indexing conveyors with electric clutch or clutch/brake mechanisms
- End stops and intermediate stops
- Pallet handling mechanisms
- Timing belt conveyors
- Backlite conveyors

STANDARD FLOOR STAND



ADJUSTABLE / INCLINE FLOOR STAND

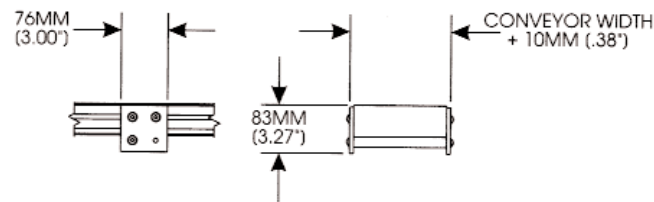


- Floor stand width "W" is determined as follows: for conveyors up to 320MM wide, floor stand width is 500MM. For 400MM, 480MM, 560MM, and 640MM wide conveyors, floor stand width is 180MM wider than the conveyor width.
- Adjustable / incline stands are available with adjustable height only, or adjustable height and incline angle (incline configuration shown above). Incline is adjustable from 0 to 90 degrees.
- Minimum belt heights: Standard stands = 230MM (9.06"). Adjustable stands = 605MM (23.8")

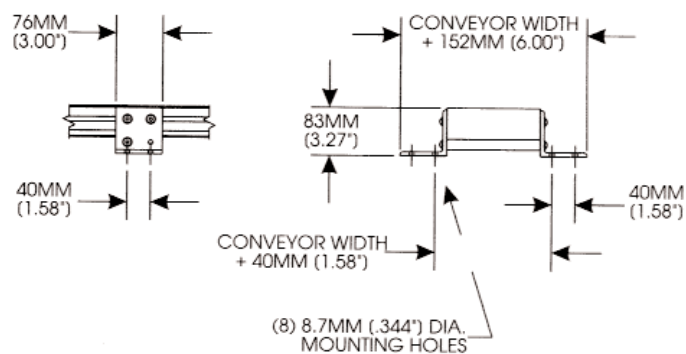
- Other stand configurations are available upon requests.
- Connecting bars are available between stands to add rigidity to conveyor systems.
- To order, specify:
 - Stand type (Standard, Adjustable Height or Adjustable Incline)
 - Nominal belt height
 - Leveling screws, Leveling Feet, or casters

RETURN ROLLER ASSEMBLIES

FLAT RETURN ROLLER

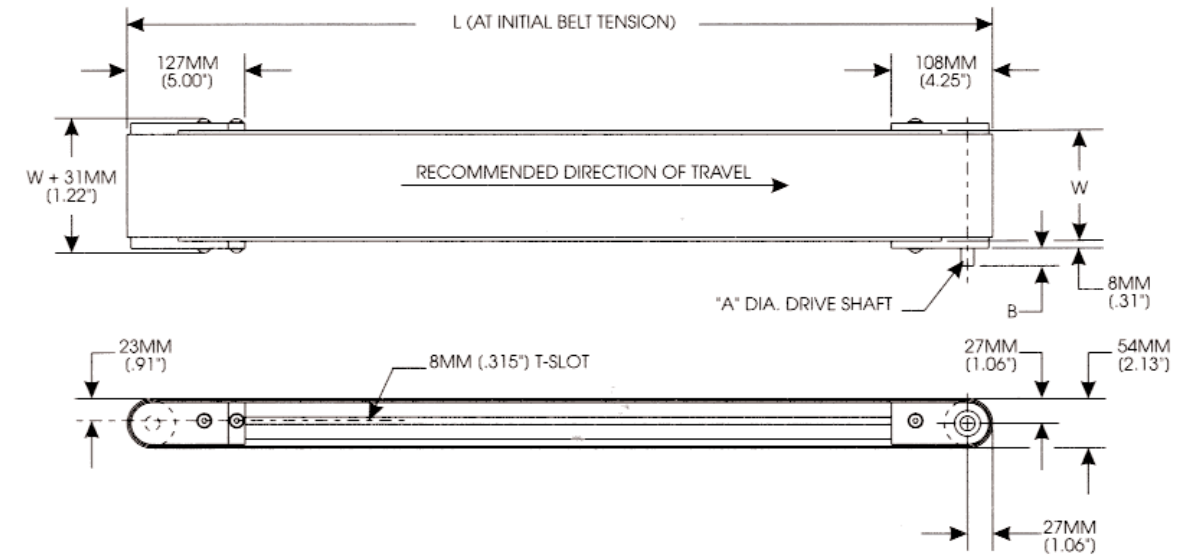


ANGLE RETURN ROLLER

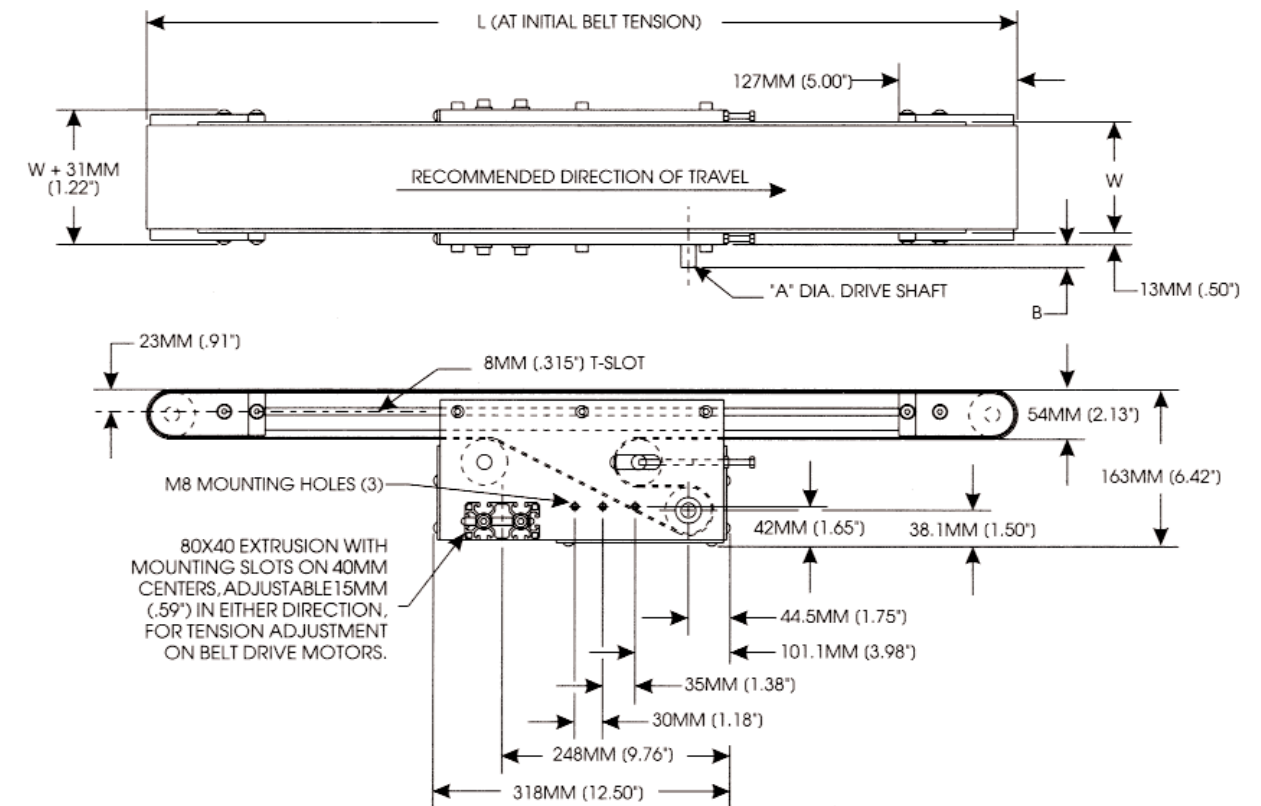


- Unless otherwise specified, all non-cleated conveyors are supplied with angle return roller assemblies.
- To order, specify return roller type (flat or angle).

STANDARD DUTY END DRIVE CONVEYOR

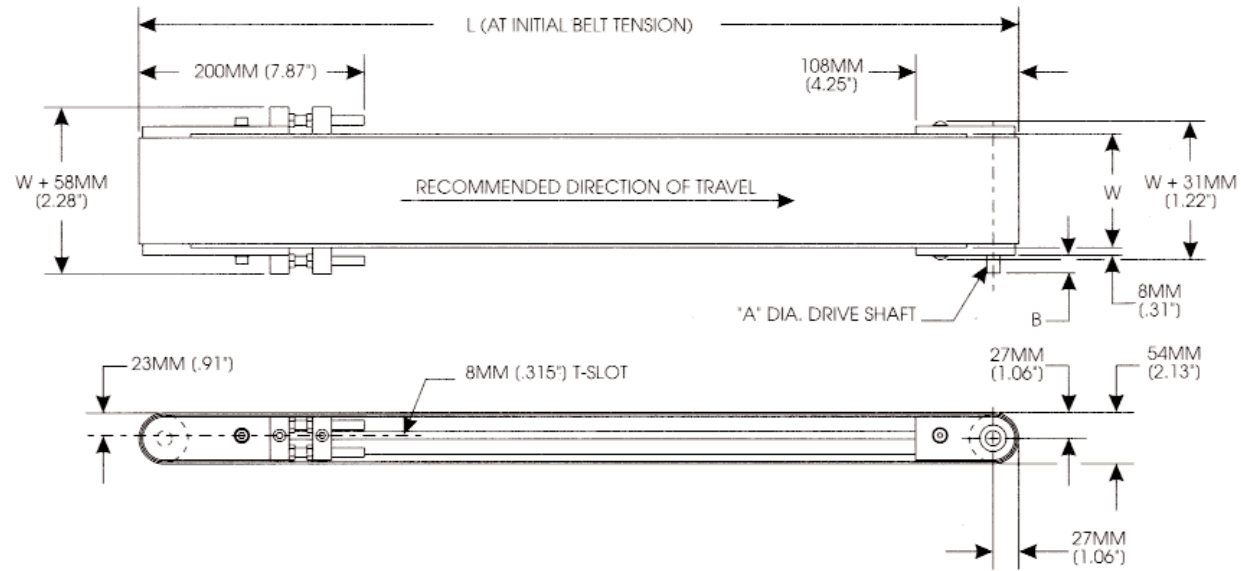


STANDARD DUTY CENTER DRIVE CONVEYOR

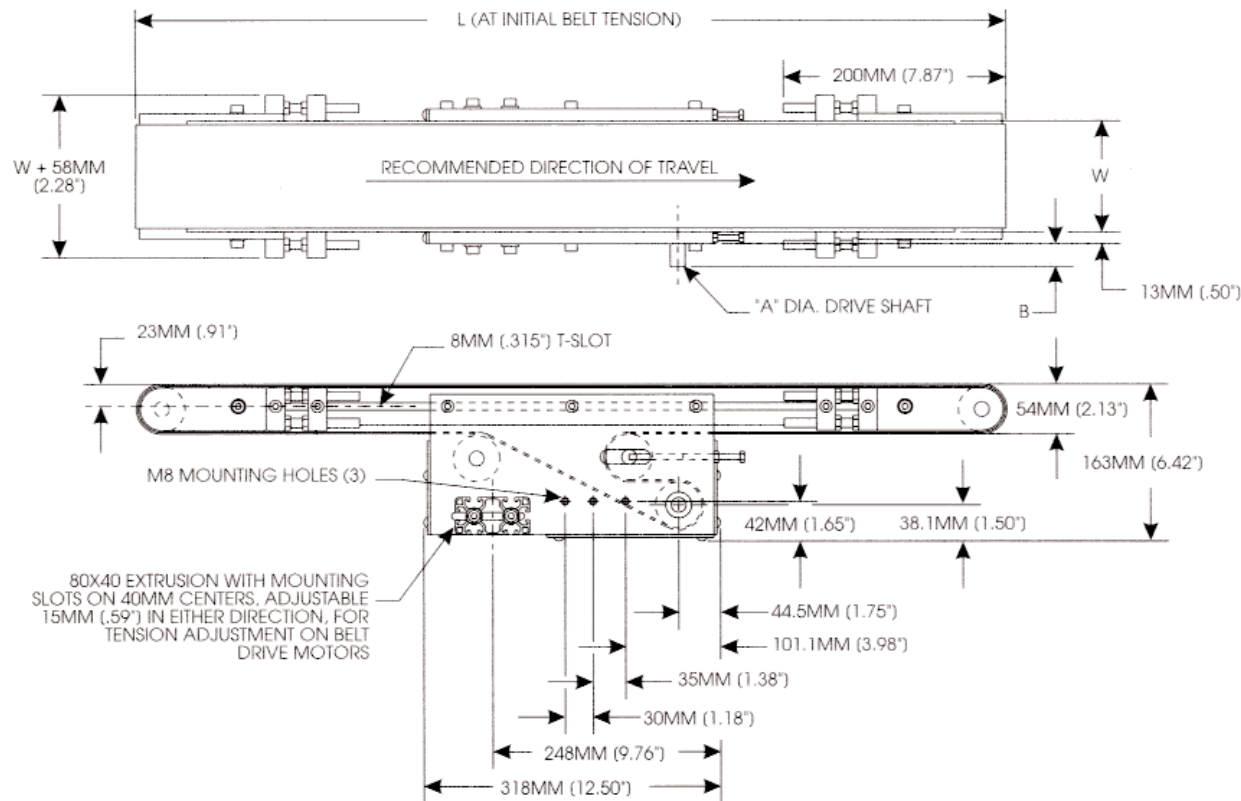


HEAVY-DUTY CONVEYORS

HEAVY-DUTY END DRIVE CONVEYOR

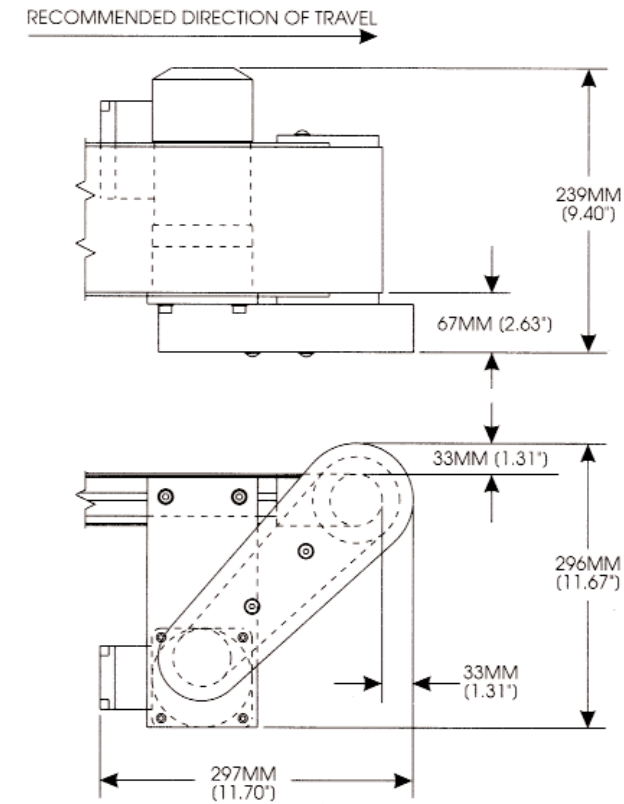


HEAVY-DUTY CENTER DRIVE CONVEYOR

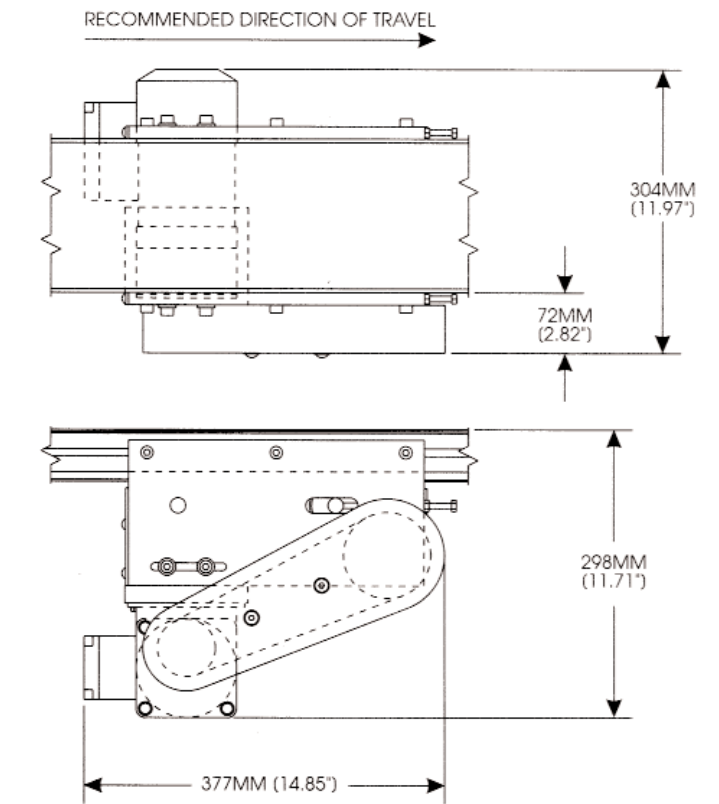


PARALLEL SHAFT BELT DRIVES

PARALLEL SHAFT UNDERCARRIAGE END DRIVE



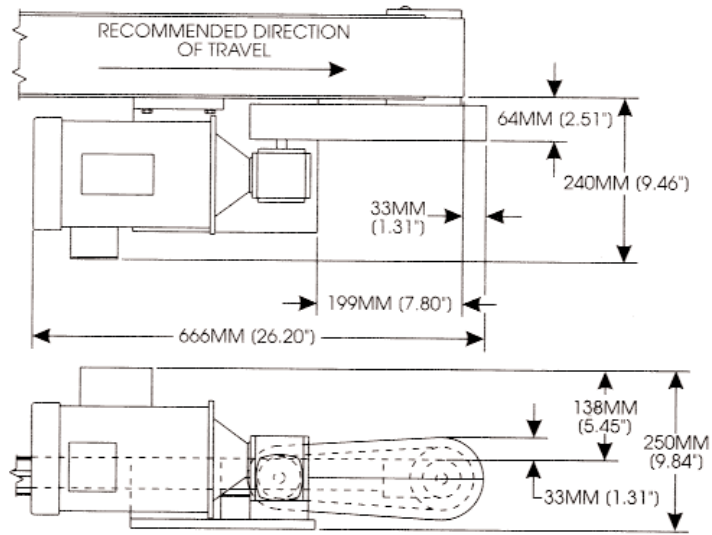
PARALLEL SHAFT BELT CENTER DRIVE



- Constant speed motors are 1/15HP or 1/9HP. Variable speed motors are 1/12HP or 1/8HP.
- Belt speeds range from 0.4MPM (1FPM) to 49MPM (160FPM) for constant speed, 0.2 MPM (0.5FPM) to 104 MPM (340FPM) for variable speed.
- Load capacities average 45KG (100LB), depending upon belt speed.

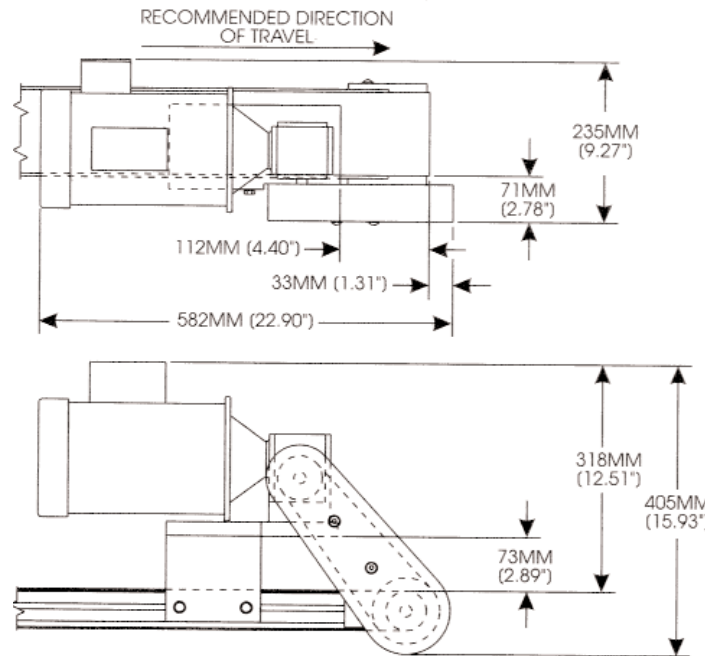
HEAVY-DUTY BELT DRIVES

HEAVY-DUTY BELT END DRIVE

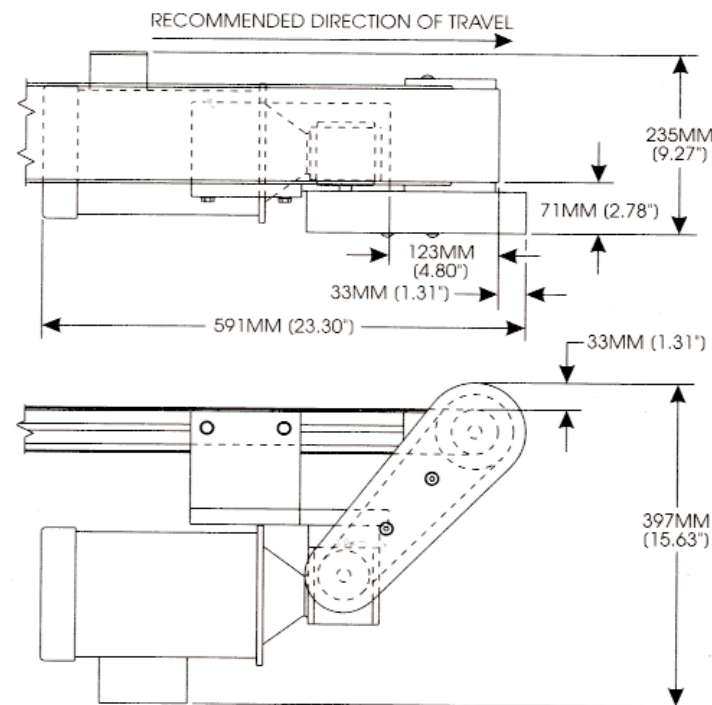


- Motors are 1/6HP, 1/4HP, 1/3HP, or 1/2HP
- Belt speeds range from 2.1MPH (7FPM) to 55MPM (180FPM).
- Load capacities average 90KG (200LB), depending upon belt speed.

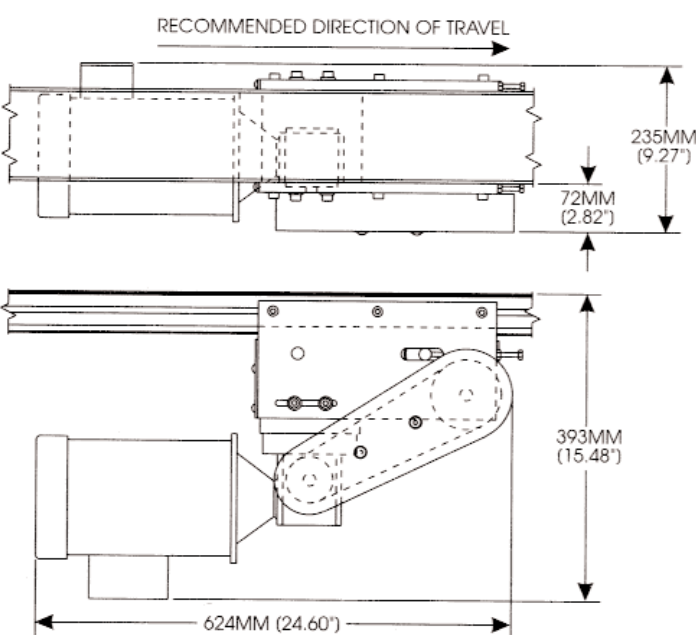
HEAVY-DUTY OVERHEAD END DRIVE



HEAVY-DUTY UNDERCARRIAGE END DRIVE



HEAVY-DUTY BELT CENTER DRIVE



BELT STYLES AND CLEATS

BELT STYLES

- 1. HARD-TOP URETHANE:** The hard-top belt surface allows for product accumulation on the conveyor. Low C.O.F., F.D.A. Approved / Green, Anti-static, 1.4mm Thick, Max. Temp. 212° F.
- 2. SOFT-TOP URETHANE:** A high-friction belt surface provides greater belt-to-product adhesion. This is the preferred belt for cleat attachment (see cleat section). High C.O.F., F.D.A. Approved / White, Anti-static, 1.4mm Thick, Max. Temp. 212° F.
- 3. LATTICE-TOP FRICTION BELT:** A textured surface suitable for conveying parts up slight inclines. High C.O.F., Anti-static, 2.3mm Thick, Max. Temp. 140° F.
- 4. ROUGH-TOP FRICTION BELT:** A rough surface for conveying parts up steeper inclines. High C.O.F., Anti-static, 5.5mm Thick, Max. Temp. 140° F.
- 5. FDA BELT:** A general purpose belt suitable for use in food and pharmaceutical applications. High or Low C.O.F., F.D.A. Approved / White, Anti-static, 1.4mm Thick, Max. Temp. 212° F.

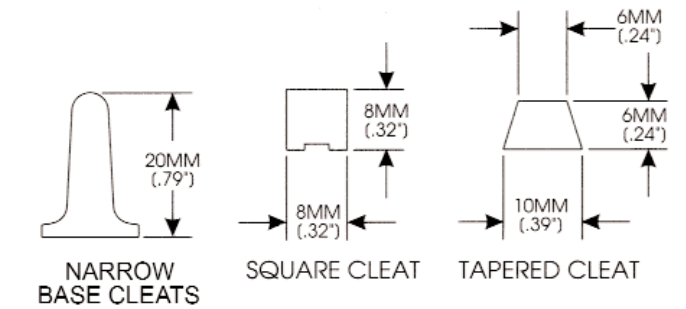
Note: Many other belt styles are available for a wide range of special applications. Consult factory for details.

CLEATS

Cleats are frequently "welded" or glued to belts and allow conveyors to carry parts up steep inclines. Cleats can also be used to provide part separation.

Standard cleat styles are shown below. Other cleat configurations are available upon request.

- To order, specify:
 - Cleat style
 - Distance between cleat centers



Note: Narrow Base Cleats are available in heights of 20, 30, 40, 50, and 60MM.

DRIVE SYSTEMS GENERAL INFORMATION

DRIVE SYSTEMS - GENERAL INFORMATION

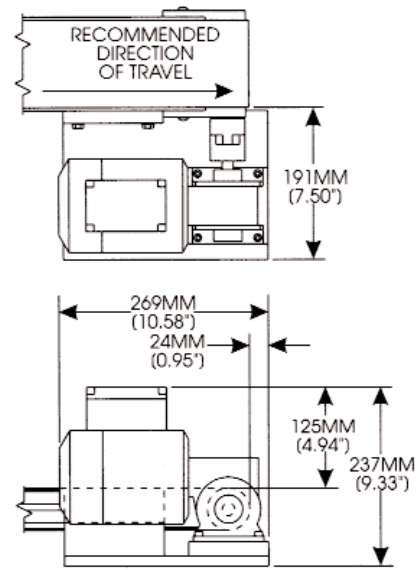
We offer a wide variety of drives to allow for many different configuration requirements. In addition to the standard drives listed on the following pages, we will supply special drives upon request.

Drives are mounted left-hand or right-hand (right-hand mounting is shown in all illustrations).

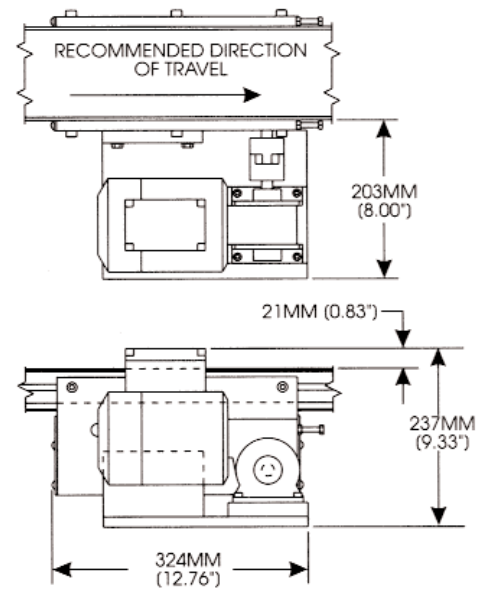
Due to the wide range of application variables (conveyor size, belt speed, accumulation, incline, etc.), please consult the factory before specifying a drive to insure it will work in your particular application.

STANDARD DUTY DIRECT DRIVES

STANDARD DUTY DIRECT END DRIVE



STANDARD DUTY DIRECT CENTER DRIVE

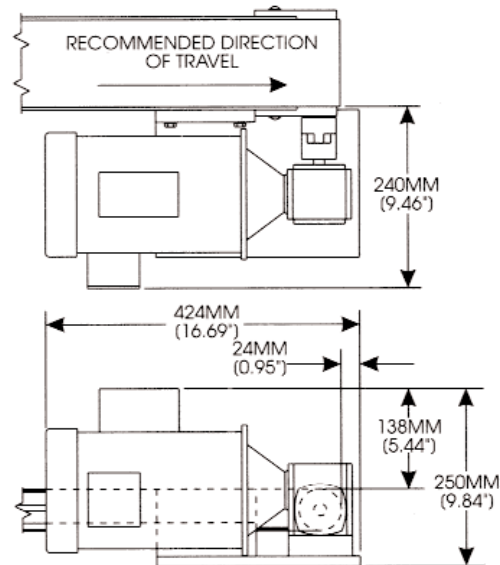


- Load capacities average 32KG (70LB), depending upon belt speed.

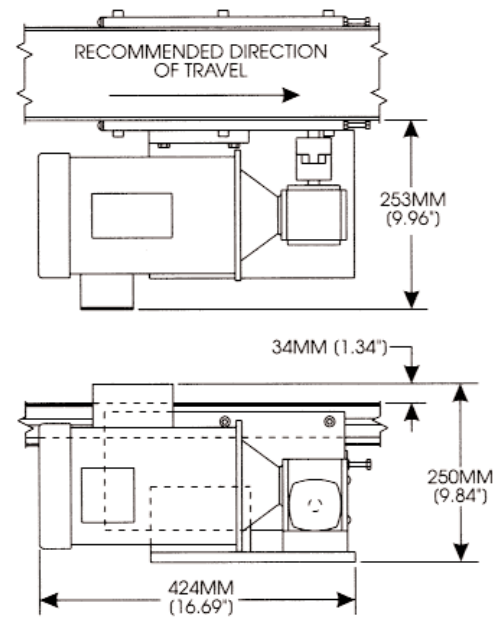
- Constant speed motors are 1/9HP, 1/6HP or 1/4HP. Variable speed motors are 1/8HP or 1/4HP.
- Belt speeds range from 3.6MPM (12FPM) to 53 MPM (175FPM) for constant speed, 3MPM (11FPM) to 78 MPM (258FPM) for variable speed.

HEAVY-DUTY DIRECT DRIVES

HEAVY-DUTY DIRECT END DRIVE



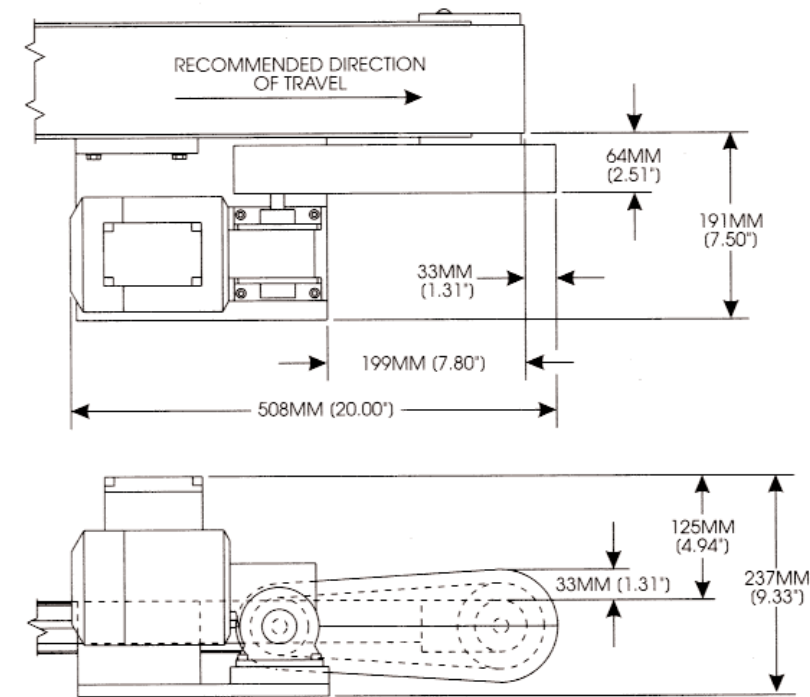
HEAVY-DUTY DIRECT CENTER DRIVE



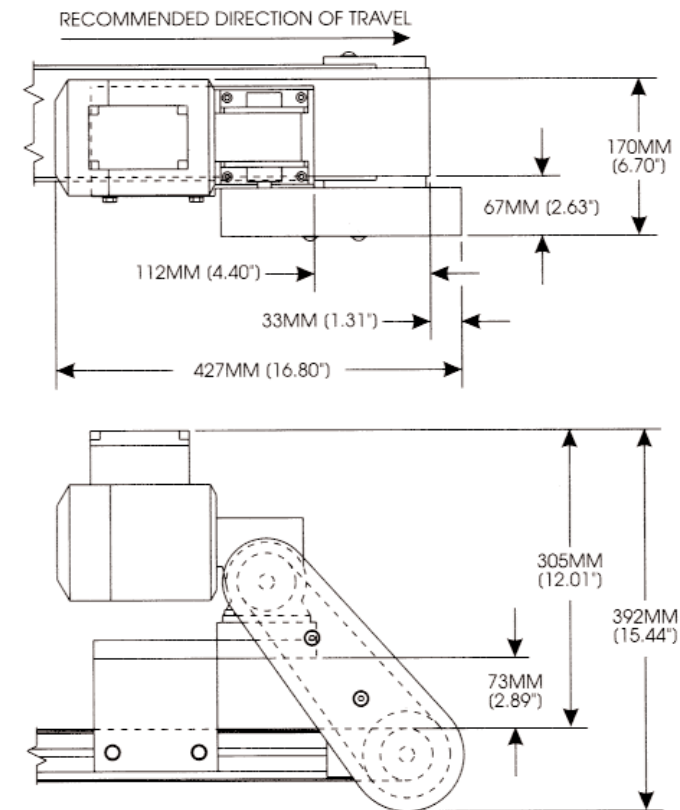
- Motors are 1/6HP, 1/4HP, 1/3HP, or 1/2HP.
- Belt speeds range from 6MPM (18FPM) to 55 MPM (180FPM).
- Load capacities average 90KG (200LB), depending upon belt request.

STANDARD DUTY BELT DRIVES

STANDARD DUTY BELT END DRIVE



STANDARD DUTY OVERHEAD END DRIVE



- Constant speed motors are 1/9HP, 1/6HP or 1/4HP. Variable speed motors are 1/8HP or 1/4HP.
- Belt speeds range from 1.5MPM (5FPM) to 53MPM (175FPM) for constant speed, 1.2MPM (4FPM) to 78 MPM (258FPM) for variable speed.
- Load capacities average 45KG (100LB), depending upon belt speed.